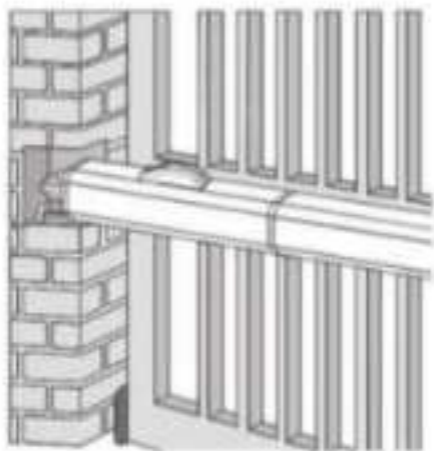


400



FAAC

Contents

01 INSTALLATION OF COMPONENTS FOR AUTOMATED	0 10
WARNING FOR THE INSTALLER	0 10
1 DESCRIPTION AND TECHNICAL SPECIFICATIONS	0 11
1.1 GENERAL	0 11
2 ACCESS DEVICE (MOUNTED SYSTEM)	0 11
3 INSTALLING THE AUTOMATED SYSTEM	0 12
3.1 PRELIMINARY CHECKS	0 12
3.2 INSTALLATION CONDITIONS	0 12
3.2.1 GENERAL RULES FOR DETERMINING THE INSTALLATION CONDITIONS	0 12
3.3 INSTALLATION OF THE OPERATOR	0 12
4 START UP	0 14
4.1 ACTIVATING THE AUTOMATED SYSTEM	0 14
5 FINAL OPERATIONS	0 14
6 AUTOMATED SYSTEM SET	0 14
7 SPECIAL OPERATIONS	0 14
8 TECHNICAL SUPPORT OPERATOR GUIDE	0 14
9 SPECIAL APPLICATIONS FOR VARIOUS CASES	0 15
9.1 OPERATOR MANUAL FOR CUSTOMER, SYSTEM OPERATOR MANUAL GUIDE	0 15
10 INDEXING	0 15
11 INDEX	0 15
12 APPENDICES	0 15

Read the instructions carefully for the safe and correct use of the product.

 **Warning:** Read the instructions carefully for the safe and correct use of the product.



IP logo is a registered trademark of the IP logo.

FAAC

FAAC
FACILITY ACCESS CONTROL
FACILITY ACCESS CONTROL
FACILITY ACCESS CONTROL

EC DECLARATION OF CONFORMITY FOR MACHINES (DIRECTIVE 2006/42/EC)

Manufacturer: KAC Co., Ltd.

Name: KAC Co., Ltd. (Korea) Ltd. (Korea) Ltd. (Korea) Ltd.

Address: 22, Seongnam-daero, Seongnam-si, Gyeonggi-do, Korea

I, the undersigned, being the responsible person for the design and construction of the machine, hereby declare that the machine is in conformity with the requirements of the following Directives:

1. Directive 2006/42/EC on the approximation of the laws, regulations, administrative provisions and standards of the Member States relating to machinery.

2. Directive 2002/95/EC on the restriction of use of certain hazardous substances (RoHS).

3. Directive 2002/96/EC on waste electrical and electronic equipment (WEEE).

I also declare that the machine is in conformity with the requirements of the following standards:

Signature: 

WARNINGS FOR THE INSTALLED GENERAL SAFETY REQUIREMENTS

- | | |
|--|---|
| <p>1. Read the instructions carefully before using the machine. Do not use the machine if you are not qualified to do so. Do not use the machine if you are under the influence of alcohol, drugs, or other substances that impair your judgment or ability to operate the machine safely.</p> <p>2. Do not use the machine if you are tired or distracted.</p> <p>3. Do not use the machine if you are wearing loose clothing, jewelry, or long hair. Do not use the machine if you are wearing safety glasses or contact lenses.</p> <p>4. Do not use the machine if you are pregnant or breastfeeding.</p> <p>5. Do not use the machine if you are a child or young person.</p> <p>6. Do not use the machine if you are a person with a medical condition that may be affected by the use of the machine.</p> <p>7. Do not use the machine if you are a person with a mental health condition that may be affected by the use of the machine.</p> <p>8. Do not use the machine if you are a person with a physical health condition that may be affected by the use of the machine.</p> <p>9. Do not use the machine if you are a person with a hearing impairment that may be affected by the use of the machine.</p> <p>10. Do not use the machine if you are a person with a vision impairment that may be affected by the use of the machine.</p> <p>11. Do not use the machine if you are a person with a cognitive impairment that may be affected by the use of the machine.</p> <p>12. Do not use the machine if you are a person with a physical disability that may be affected by the use of the machine.</p> <p>13. Do not use the machine if you are a person with a mental disability that may be affected by the use of the machine.</p> <p>14. Do not use the machine if you are a person with a cognitive disability that may be affected by the use of the machine.</p> <p>15. Do not use the machine if you are a person with a physical disability that may be affected by the use of the machine.</p> <p>16. Do not use the machine if you are a person with a mental disability that may be affected by the use of the machine.</p> <p>17. Do not use the machine if you are a person with a cognitive disability that may be affected by the use of the machine.</p> <p>18. Do not use the machine if you are a person with a physical disability that may be affected by the use of the machine.</p> <p>19. Do not use the machine if you are a person with a mental disability that may be affected by the use of the machine.</p> <p>20. Do not use the machine if you are a person with a cognitive disability that may be affected by the use of the machine.</p> | <p>21. Do not use the machine if you are a person with a physical disability that may be affected by the use of the machine.</p> <p>22. Do not use the machine if you are a person with a mental disability that may be affected by the use of the machine.</p> <p>23. Do not use the machine if you are a person with a cognitive disability that may be affected by the use of the machine.</p> <p>24. Do not use the machine if you are a person with a physical disability that may be affected by the use of the machine.</p> <p>25. Do not use the machine if you are a person with a mental disability that may be affected by the use of the machine.</p> <p>26. Do not use the machine if you are a person with a cognitive disability that may be affected by the use of the machine.</p> <p>27. Do not use the machine if you are a person with a physical disability that may be affected by the use of the machine.</p> <p>28. Do not use the machine if you are a person with a mental disability that may be affected by the use of the machine.</p> <p>29. Do not use the machine if you are a person with a cognitive disability that may be affected by the use of the machine.</p> <p>30. Do not use the machine if you are a person with a physical disability that may be affected by the use of the machine.</p> <p>31. Do not use the machine if you are a person with a mental disability that may be affected by the use of the machine.</p> <p>32. Do not use the machine if you are a person with a cognitive disability that may be affected by the use of the machine.</p> <p>33. Do not use the machine if you are a person with a physical disability that may be affected by the use of the machine.</p> <p>34. Do not use the machine if you are a person with a mental disability that may be affected by the use of the machine.</p> <p>35. Do not use the machine if you are a person with a cognitive disability that may be affected by the use of the machine.</p> <p>36. Do not use the machine if you are a person with a physical disability that may be affected by the use of the machine.</p> <p>37. Do not use the machine if you are a person with a mental disability that may be affected by the use of the machine.</p> <p>38. Do not use the machine if you are a person with a cognitive disability that may be affected by the use of the machine.</p> <p>39. Do not use the machine if you are a person with a physical disability that may be affected by the use of the machine.</p> <p>40. Do not use the machine if you are a person with a mental disability that may be affected by the use of the machine.</p> <p>41. Do not use the machine if you are a person with a cognitive disability that may be affected by the use of the machine.</p> <p>42. Do not use the machine if you are a person with a physical disability that may be affected by the use of the machine.</p> <p>43. Do not use the machine if you are a person with a mental disability that may be affected by the use of the machine.</p> <p>44. Do not use the machine if you are a person with a cognitive disability that may be affected by the use of the machine.</p> <p>45. Do not use the machine if you are a person with a physical disability that may be affected by the use of the machine.</p> <p>46. Do not use the machine if you are a person with a mental disability that may be affected by the use of the machine.</p> <p>47. Do not use the machine if you are a person with a cognitive disability that may be affected by the use of the machine.</p> <p>48. Do not use the machine if you are a person with a physical disability that may be affected by the use of the machine.</p> <p>49. Do not use the machine if you are a person with a mental disability that may be affected by the use of the machine.</p> <p>50. Do not use the machine if you are a person with a cognitive disability that may be affected by the use of the machine.</p> |
|--|---|

AUTOMATED SYSTEM 400

6000051027 011 0030 6000051027 011 0030 6000051027 011 0030
 6000051027 011 0030 6000051027 011 0030 6000051027 011 0030

The HAC Automated System 400 is a complete system of 20 x 125 x 125 mm (8" x 5" x 5") aluminum extrusion with a finished black anodized surface. It is designed for use in a variety of applications, including:

- Signal enclosures
- Control panels
- Test equipment enclosures
- Instrumentation enclosures

For all associated drawings and drawings visit the website
 www.hac.com 303-595-3333

CONTAINS ONE TECHNICAL DRAWING(S)



Fig. 1 Exploded view of Automated System 400

Part No.	Part Name	Drawing Notes		
		Material	Finish	Quantity
6000051027	Extrusion	Aluminum	Black Anodized	1
6000051028	Cap	Aluminum	Black Anodized	4
6000051029	Foot	Aluminum	Black Anodized	4
6000051030	Fastener	Steel	Black Oxide	4
6000051031	Cap	Aluminum	Black Anodized	4
6000051032	Foot	Aluminum	Black Anodized	4
6000051033	Fastener	Steel	Black Oxide	4

©2010 HAC International Inc. All rights reserved.

30 DRAWING



6 DRAWING SHEETS DRAWING SHEETS



6000051027 011 0030 6000051027 011 0030 6000051027 011 0030
 6000051027 011 0030 6000051027 011 0030 6000051027 011 0030
 6000051027 011 0030 6000051027 011 0030 6000051027 011 0030

2. INSTALLING THE WATERPROOF BOARD

2.1. PREPARATION

1. Check the wall surface and floor surface for any cracks and repair them with a repair mortar before the waterproofing.
2. Check the surface of the wall and floor for moisture content.
3. Apply primer on the wall.
4. Apply WAC Water Resistant Board with the proper adhesive on the wall.
5. Apply WAC Water Resistant Board on the floor.
6. Apply WAC Water Resistant Board on the ceiling.
7. Apply WAC Water Resistant Board on the wall.
8. Apply WAC Water Resistant Board on the floor.

2.2. INSTALLATION

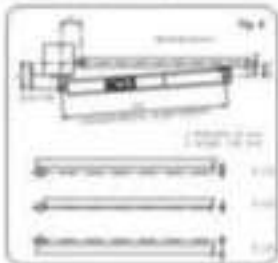


Fig. 2. Installation of WAC Water Resistant Board

WAC Water Resistant Board	WAC Water Resistant Board	WAC Water Resistant Board	WAC Water Resistant Board	WAC Water Resistant Board	WAC Water Resistant Board
1.2m x 2.4m	1.2m x 1.2m	1.2m x 0.6m	1.2m x 2.4m	1.2m x 1.2m	1.2m x 0.6m

Fig. 3. Installation of WAC Water Resistant Board

WAC Water Resistant Board	WAC Water Resistant Board	WAC Water Resistant Board	WAC Water Resistant Board	WAC Water Resistant Board	WAC Water Resistant Board
1.2m x 2.4m	1.2m x 1.2m	1.2m x 0.6m	1.2m x 2.4m	1.2m x 1.2m	1.2m x 0.6m

After the installation of the WAC Water Resistant Board, the wall and floor surface should be checked for any cracks and repaired with a repair mortar before the application of the waterproofing.

3. INSTALLING THE WATERPROOF BOARD

The waterproofing of the wall and floor surface should be done by applying the WAC Water Resistant Board with the proper adhesive.

3.1. PREPARATION

1. Check the wall surface and floor surface for any cracks and repair them with a repair mortar before the waterproofing.
2. Check the surface of the wall and floor for moisture content.
3. Apply primer on the wall.
4. Apply WAC Water Resistant Board with the proper adhesive on the wall.
5. Apply WAC Water Resistant Board on the floor.
6. Apply WAC Water Resistant Board on the ceiling.
7. Apply WAC Water Resistant Board on the wall.
8. Apply WAC Water Resistant Board on the floor.

3.2. INSTALLATION

1. The waterproofing of the wall and floor surface should be done by applying the WAC Water Resistant Board with the proper adhesive.
2. The waterproofing of the wall and floor surface should be done by applying the WAC Water Resistant Board with the proper adhesive.
3. The waterproofing of the wall and floor surface should be done by applying the WAC Water Resistant Board with the proper adhesive.
4. The waterproofing of the wall and floor surface should be done by applying the WAC Water Resistant Board with the proper adhesive.
5. The waterproofing of the wall and floor surface should be done by applying the WAC Water Resistant Board with the proper adhesive.
6. The waterproofing of the wall and floor surface should be done by applying the WAC Water Resistant Board with the proper adhesive.
7. The waterproofing of the wall and floor surface should be done by applying the WAC Water Resistant Board with the proper adhesive.
8. The waterproofing of the wall and floor surface should be done by applying the WAC Water Resistant Board with the proper adhesive.

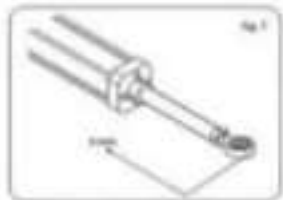
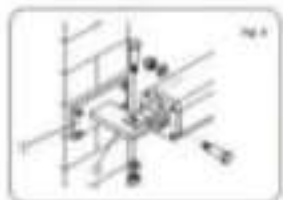


Fig. 4. Installation of WAC Water Resistant Board

3.3. INSTALLATION

1. The waterproofing of the wall and floor surface should be done by applying the WAC Water Resistant Board with the proper adhesive.
2. The waterproofing of the wall and floor surface should be done by applying the WAC Water Resistant Board with the proper adhesive.
3. The waterproofing of the wall and floor surface should be done by applying the WAC Water Resistant Board with the proper adhesive.
4. The waterproofing of the wall and floor surface should be done by applying the WAC Water Resistant Board with the proper adhesive.
5. The waterproofing of the wall and floor surface should be done by applying the WAC Water Resistant Board with the proper adhesive.
6. The waterproofing of the wall and floor surface should be done by applying the WAC Water Resistant Board with the proper adhesive.
7. The waterproofing of the wall and floor surface should be done by applying the WAC Water Resistant Board with the proper adhesive.
8. The waterproofing of the wall and floor surface should be done by applying the WAC Water Resistant Board with the proper adhesive.

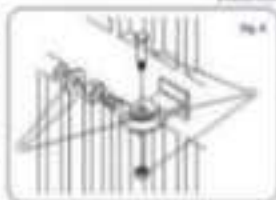
1. Insert the assembly in the case (positioned with the handle pointing in).
2. Tighten the screws to the specified torque (see the table on page 44).
3. Remove the screws and handle 2.
4. The device is ready to be used (positioned with the handle pointing in).



5. Check the position and torque 5.
6. If the handle is not in the correct position, it can be rotated by 90°.
7. Close the case lid and insert the screws (shown in exploded view) to the case lid. Tighten the screws to the specified torque (see table on page 44).
8. The device is ready to be used (positioned with the handle pointing in).

NOTE The device is ready to be used (positioned with the handle pointing in).

9. Tighten the screws to the specified torque (see the table on page 44).
10. The device is ready to be used (positioned with the handle pointing in).



Insertion of the handle assembly into the case (positioned with the handle pointing in).

NOTE The device is ready to be used (positioned with the handle pointing in).

11. Tighten the screws to the specified torque (see the table on page 44).
12. The device is ready to be used (positioned with the handle pointing in).





43

Insert the shaft into the hole of the motor and fix it with the screwdriver.

44

Insert the shaft into the hole of the motor and fix it with the screwdriver. Then, insert the shaft into the hole of the motor and fix it with the screwdriver. Finally, insert the shaft into the hole of the motor and fix it with the screwdriver.

Insert the shaft into the hole of the motor and fix it with the screwdriver. Then, insert the shaft into the hole of the motor and fix it with the screwdriver. Finally, insert the shaft into the hole of the motor and fix it with the screwdriver.

Insert the shaft into the hole of the motor and fix it with the screwdriver. Then, insert the shaft into the hole of the motor and fix it with the screwdriver. Finally, insert the shaft into the hole of the motor and fix it with the screwdriver.

Insert the shaft into the hole of the motor and fix it with the screwdriver. Then, insert the shaft into the hole of the motor and fix it with the screwdriver. Finally, insert the shaft into the hole of the motor and fix it with the screwdriver.

Insert the shaft into the hole of the motor and fix it with the screwdriver. Then, insert the shaft into the hole of the motor and fix it with the screwdriver. Finally, insert the shaft into the hole of the motor and fix it with the screwdriver.

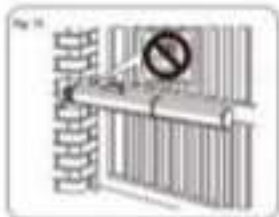
45

Insert the shaft into the hole of the motor and fix it with the screwdriver. Then, insert the shaft into the hole of the motor and fix it with the screwdriver. Finally, insert the shaft into the hole of the motor and fix it with the screwdriver.



6. ATTACHING SPRING WIRE

When attaching the spring wire to the spring base, the spring wire must be inserted into the spring base from the side of the spring base that is opposite the side of the spring base that is attached to the spring base. The spring wire must be inserted into the spring base from the side of the spring base that is opposite the side of the spring base that is attached to the spring base.

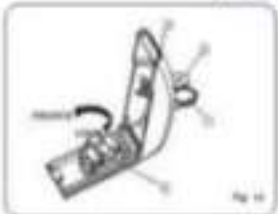


7. SPRING OPERATION

The spring must be operated in the correct direction. The spring must be operated in the correct direction. The spring must be operated in the correct direction. The spring must be operated in the correct direction. The spring must be operated in the correct direction.

8. RETURNING SPRING OPERATION WIRE

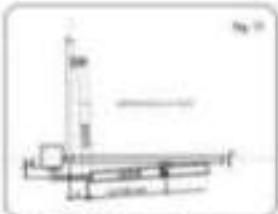
When returning the spring operation wire, the spring operation wire must be returned to the correct position. The spring operation wire must be returned to the correct position. The spring operation wire must be returned to the correct position. The spring operation wire must be returned to the correct position.



9. SPECIAL APPLICATION FOR SPRING BASE WIRE

9.1 SPRING BASE WIRE WITH SPRING OPERATION WIRE (Fig. 15)

The spring base wire with spring operation wire is used in special applications. The spring base wire with spring operation wire is used in special applications. The spring base wire with spring operation wire is used in special applications. The spring base wire with spring operation wire is used in special applications.



Part No.	1	2	3	4	5	6	7	8	9	10	11	12	13	14	15	16	17	18	19	20	
Part No.																					

12. Installation

See correct installation in the section of your user manual. Do not install the device in the vicinity of heat pipes, radiators, stoves, ovens, air conditioning or the exhaust duct. Do not install in the bathroom.

- 1) Do not install in the bathroom.
- 2) Do not install in the vicinity of heat pipes, radiators, stoves, ovens, air conditioning or the exhaust duct.
- 3) Do not install in the vicinity of heat pipes, radiators, stoves, ovens, air conditioning or the exhaust duct.
- 4) Do not install in the vicinity of heat pipes, radiators, stoves, ovens, air conditioning or the exhaust duct.
- 5) Do not install in the vicinity of heat pipes, radiators, stoves, ovens, air conditioning or the exhaust duct.

⚠ Attention

Do not install the device in the vicinity of heat pipes, radiators, stoves, ovens, air conditioning or the exhaust duct. Do not install in the bathroom. Do not install in the vicinity of heat pipes, radiators, stoves, ovens, air conditioning or the exhaust duct.

13. Notes

For more information, please refer to the user manual.



14. Troubleshooting

For troubleshooting, please refer to the user manual.

Problem	Solution
Device does not work	Check if the device is plugged in correctly. Check if the power is on. Check if the device is not blocked by any object. Check if the device is not blocked by any object.
Device does not work	Check if the device is plugged in correctly. Check if the power is on. Check if the device is not blocked by any object. Check if the device is not blocked by any object.
Device does not work	Check if the device is plugged in correctly. Check if the power is on. Check if the device is not blocked by any object. Check if the device is not blocked by any object.
Device does not work	Check if the device is plugged in correctly. Check if the power is on. Check if the device is not blocked by any object. Check if the device is not blocked by any object.
Device does not work	Check if the device is plugged in correctly. Check if the power is on. Check if the device is not blocked by any object. Check if the device is not blocked by any object.
Device does not work	Check if the device is plugged in correctly. Check if the power is on. Check if the device is not blocked by any object. Check if the device is not blocked by any object.
Device does not work	Check if the device is plugged in correctly. Check if the power is on. Check if the device is not blocked by any object. Check if the device is not blocked by any object.

Notes

USER'S GUIDE

ATTACHING STRAP AND

Place the attachment device behind the handle and press back to lock it.

GENERAL SAFETY INSTRUCTIONS

Read the following instructions before using the product and use them to help you.

Always use the correct work technique.

Do not use the product if you are tired, stressed or under the influence of alcohol or drugs.

Do not use the product if you are ill or if you have a physical condition that may affect your ability to use the product.

Do not use the product if you are wearing a watch, jewelry or loose clothing.

Do not use the product if you are wearing a hat or if you have long hair.

Do not use the product if you are wearing a backpack or a heavy bag.

Do not use the product if you are wearing a seat belt or a harness.

Do not use the product if you are wearing a safety harness or a fall arrest system.

Do not use the product if you are wearing a safety harness or a fall arrest system.

Do not use the product if you are wearing a safety harness or a fall arrest system.

Do not use the product if you are wearing a safety harness or a fall arrest system.

Do not use the product if you are wearing a safety harness or a fall arrest system.

Do not use the product if you are wearing a safety harness or a fall arrest system.

Do not use the product if you are wearing a safety harness or a fall arrest system.

Do not use the product if you are wearing a safety harness or a fall arrest system.

Do not use the product if you are wearing a safety harness or a fall arrest system.

Do not use the product if you are wearing a safety harness or a fall arrest system.

Do not use the product if you are wearing a safety harness or a fall arrest system.

Do not use the product if you are wearing a safety harness or a fall arrest system.

Do not use the product if you are wearing a safety harness or a fall arrest system.

Do not use the product if you are wearing a safety harness or a fall arrest system.

Do not use the product if you are wearing a safety harness or a fall arrest system.

Do not use the product if you are wearing a safety harness or a fall arrest system.

Do not use the product if you are wearing a safety harness or a fall arrest system.

Do not use the product if you are wearing a safety harness or a fall arrest system.

Do not use the product if you are wearing a safety harness or a fall arrest system.

Do not use the product if you are wearing a safety harness or a fall arrest system.

Do not use the product if you are wearing a safety harness or a fall arrest system.

Do not use the product if you are wearing a safety harness or a fall arrest system.

Do not use the product if you are wearing a safety harness or a fall arrest system.

Do not use the product if you are wearing a safety harness or a fall arrest system.

Do not use the product if you are wearing a safety harness or a fall arrest system.

Do not use the product if you are wearing a safety harness or a fall arrest system.

Do not use the product if you are wearing a safety harness or a fall arrest system.

Do not use the product if you are wearing a safety harness or a fall arrest system.

Do not use the product if you are wearing a safety harness or a fall arrest system.

Do not use the product if you are wearing a safety harness or a fall arrest system.

Do not use the product if you are wearing a safety harness or a fall arrest system.

Do not use the product if you are wearing a safety harness or a fall arrest system.

Do not use the product if you are wearing a safety harness or a fall arrest system.

Do not use the product if you are wearing a safety harness or a fall arrest system.

Do not use the product if you are wearing a safety harness or a fall arrest system.

Do not use the product if you are wearing a safety harness or a fall arrest system.

Do not use the product if you are wearing a safety harness or a fall arrest system.

Do not use the product if you are wearing a safety harness or a fall arrest system.

Do not use the product if you are wearing a safety harness or a fall arrest system.

Do not use the product if you are wearing a safety harness or a fall arrest system.

Do not use the product if you are wearing a safety harness or a fall arrest system.

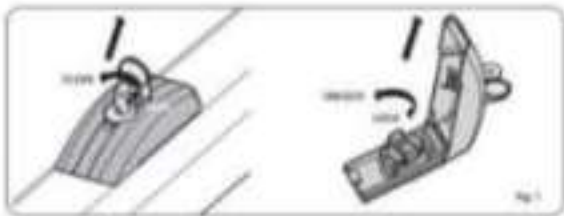
Do not use the product if you are wearing a safety harness or a fall arrest system.

Do not use the product if you are wearing a safety harness or a fall arrest system.

Do not use the product if you are wearing a safety harness or a fall arrest system.

Do not use the product if you are wearing a safety harness or a fall arrest system.

Do not use the product if you are wearing a safety harness or a fall arrest system.



MAINTENANCE REGISTER

Institution Name _____
 Address _____
 Date of Comm. _____
 School Name _____
 Telephone No. _____

Machinery

No.	Particulars	Quantity	Rate	Total

Signature of Head of the Institution _____

No.	Date	Description of Job	Signature
1			
2			
3			
4			
5			
6			
7			
8			
9			
10			

Sei un esperto di Macroeconomia e devi scrivere un articolo da 1000 parole circa, su un tema che ti indichiamo. Il tuo articolo deve essere scritto in un linguaggio accademico e deve essere ben strutturato. Il tuo articolo deve essere scritto in un linguaggio accademico e deve essere ben strutturato. Il tuo articolo deve essere scritto in un linguaggio accademico e deve essere ben strutturato.

Sei un esperto di Macroeconomia e devi scrivere un articolo da 1000 parole circa, su un tema che ti indichiamo. Il tuo articolo deve essere scritto in un linguaggio accademico e deve essere ben strutturato. Il tuo articolo deve essere scritto in un linguaggio accademico e deve essere ben strutturato.

Sei un esperto di Macroeconomia e devi scrivere un articolo da 1000 parole circa, su un tema che ti indichiamo. Il tuo articolo deve essere scritto in un linguaggio accademico e deve essere ben strutturato. Il tuo articolo deve essere scritto in un linguaggio accademico e deve essere ben strutturato.

Sei un esperto di Macroeconomia e devi scrivere un articolo da 1000 parole circa, su un tema che ti indichiamo. Il tuo articolo deve essere scritto in un linguaggio accademico e deve essere ben strutturato. Il tuo articolo deve essere scritto in un linguaggio accademico e deve essere ben strutturato.

Sei un esperto di Macroeconomia e devi scrivere un articolo da 1000 parole circa, su un tema che ti indichiamo. Il tuo articolo deve essere scritto in un linguaggio accademico e deve essere ben strutturato. Il tuo articolo deve essere scritto in un linguaggio accademico e deve essere ben strutturato.



- 1. **Il ciclo di vita di un prodotto**
 - Definizione e fasi del ciclo di vita di un prodotto.
 - Impatto ambientale e sociale di ogni fase.
- 2. **La gestione dei rifiuti**
 - Strategie per la riduzione, riuso e riciclo.
 - Impatto ambientale e sociale di diverse strategie.
- 3. **Le politiche pubbliche**
 - Ruolo del governo nella promozione della sostenibilità.
 - Esempi di politiche di successo.
- 4. **Conclusioni**
 - Sintesi dei punti chiave e prospettive future.

FAAC

FAAC
Via ...
...
...

Area for student information or additional notes.